



Welcome

Your health journey begins from the moment you walk through our door

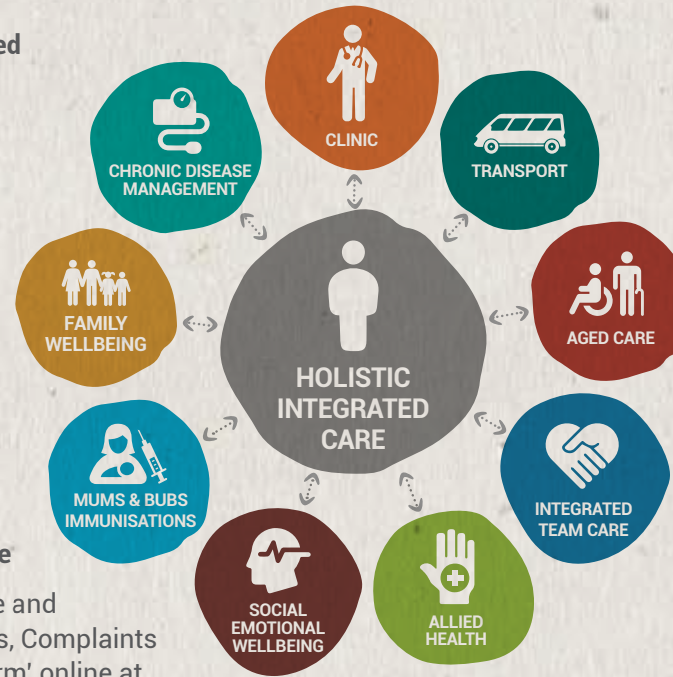
Gladstone Region Aboriginal and Islander Community Controlled Health Service Ltd (GRAICCHS) t/a Nhulundu Health Service is committed to providing a safe and friendly environment for the entire community. Here people can access the appropriate information, health education and services that will empower them to make informed decisions regarding their health.

Our service is continually growing and expanding in response to the needs of the community as we aim to provide the best possible community controlled health care to both Indigenous and non-Indigenous clients.



Community controlled health services by Community for Community

Nhulundu Health Service delivers patient centred holistic integrated care through the following programs and services:



Your feedback is important & welcome

Complete our private and secure 'Compliments, Complaints and Suggestions Form' online at [www.nhulundu.com.au/contact us](http://www.nhulundu.com.au/contact-us), or ask for a feedback form from our staff at reception..

Trading Hours: Monday - Friday from 8.30am - 5.00pm

Emergencies: Please call 000 Immediately



NHULUNDU
HEALTH SERVICE



More for our community



27-29 Goondoon St Gladstone
PO Box 5158 Gladstone Q 4680

Ph. 07 4979 0992

Fax. 07 4979 0967

Email. info@nhulundu.com.au

ACN. 610 044 641

www.nhulundu.com.au



supporting excellence
CERTIFICATION
AS/NZS ISO 9001:2015
QUALITY CERTIFIED
ORGANISATION



Proudly AGPAL Accredited
Our commitment to your safety and care



NHULUNDU
HEALTH SERVICE

Our Clinic

Primary Health Care

Nhulundu Health Service actively supports local Aboriginal and Torres Strait Islander people to improve their health and wellbeing and the health of their community by providing culturally appropriate, accessible and responsible care.

Our services include:

Comprehensive Health

- General Practice
- Preventative Health Checks
- General Health Checks
- Chronic Disease Monitoring & Management
- Asthma Education & Support
- Diabetic Management & support
- Lifestyle & Wellbeing education and support
- Mental Health Support
- Immunisations Program
- Womens Health & Baby
- Telehealth
- Eye Health

Allied Health:

- ICOP Cardiac Care
- Psychiatrist
- Psychologist
- Alcohol and Other Drugs Counsellor
- Paediatrician
- Podiatrist
- Optometrist
- Diabetes Educator

To make an appointment phone **4979 0992**
Monday to Friday 8.30am-5.00pm.

Patients will be contacted via phone, text, email or letter for reminders, recalls and updates. Your contact details and medical records are governed by strict privacy and confidentiality laws and we will not release any information without your permission.

Our Programs

Integrated Team Care

The Integrated Team Care provides vital support to all General Practice clients with timely access to specialists and allied health providers for Aboriginal and Torres Strait Islander clients. Eligible clients can seek assistance with gap fees, travel and accommodation for specialist appointments, assisted breathing equipment, blood sugar/glucose and monitoring equipment. Phone Nhulundu Health Service on **4979 0992** for more information and eligibility requirements.

Aged Care

- Home Care Package
- Commonwealth Home Support Package
- Community Care

Nhulundu Health Service has been successfully delivering aged care services for over 16 years. Our dedicated and professional team help enable elderly clients to remain living independently in their own homes. Our cost-effective services are culturally appropriate and tailored to meet the individual needs of clients aged over 65 years (50 years for Aboriginal and Torres Strait Islander people).

The Aged Care Program can provide assistance with social activities, domestic assistance including meals, specialised equipment and support with transport. Phone Nhulundu Health Service on **1800 468 000** for more information or to book an assessment to discuss your individual needs. Alternately visit the My Aged Care website (www.myagedcare.gov.au) to view the services available.

National Disability Insurance Scheme (NDIS)

Nhulundu Health Service can assist Aboriginal and Torres Strait Islander clients aged under 65 and with a permanent disability to lodge their NDIS application form. If you already have an NDIS package our support coordinator can assist with arranging available services.

Family Wellbeing Service

The Family Wellbeing Service provides culturally responsive support to improve social, emotional, physical and spiritual wellbeing, and build capacity to safely care for and protect children. The program provides Aboriginal and Torres Strait Islander children (unborn to 18 years) and families a tailored combination of services to address multiple, and sometimes complex, levels of need where there is risk of entry or re-entry into the statutory child protection system.

The Family Wellbeing team works across the Gladstone, Biloela and Banana regions building community relationships and strengthening family capacity through networks and internal services available at Nhulundu Health Service.

For an online referral go to www.nhulundu.com.au or phone the Family Wellbeing team on **4979 0992**.

We're here to help you on your health journey!

Jump on our website www.nhulundu.com.au to find out more about what our health service can offer you or simply give us a call and yarn with us today on **4979 0992**.

Need to know more?



NHULUNDU
HEALTH SERVICE